



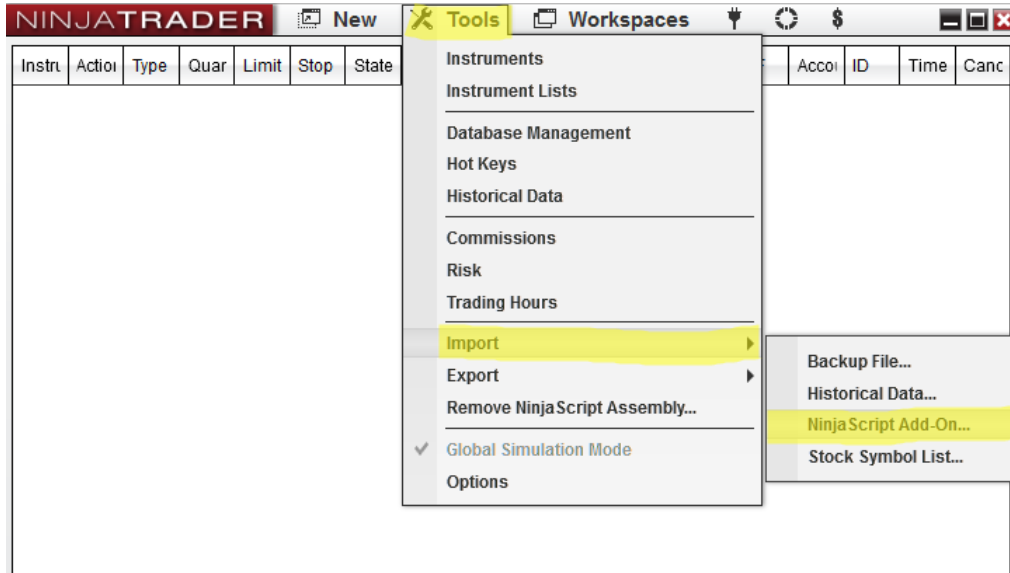
TRADER DALE'S VOLUME PROFILE PACK QUICK GUIDE

Contents

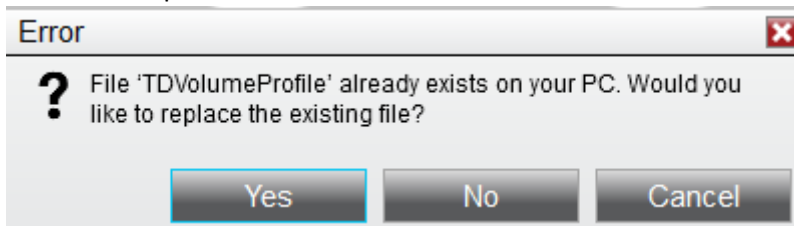
Installation.....	2
Licensing.....	2
Setting up TD's Fixed/Flexible Volume Profile	4
Flexible Volume Profile.....	7
Fixed Volume Profile	10
Contact	14

Installation

1. Download **TDVolumeProfile 2.0** from: <https://www.trader-dale.com/td-software-downloads/>
2. It is a .zip file. Don't extract it. Just save it.
3. Start NinjaTrader 8 platform and go to Tools→Import→NinjaScript Add-On...



4. Locate the **TDVolumeProfile 2.0** file that you previously downloaded and press "Open".
5. If you already have my older Volume Profile installed, then you will get an Error-message. No worries. Just press "Yes".



6. Restart NinjaTrader 8. Now the software is installed.

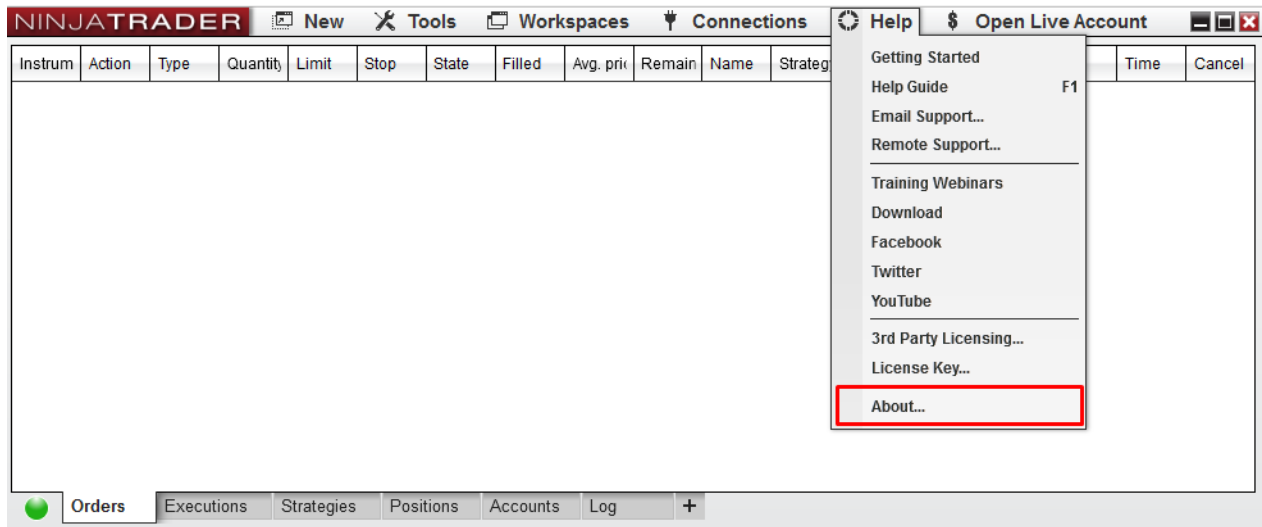
Licensing

If I have already authorized your older Volume Profile version then you can skip the "Licensing" step.

TD's Volume Profile Pack is automatically set to **5-day FREE trial**. After this period you will get asked to purchase a **lifetime license**. You can purchase your license here: <https://members.trader-dale.com/forex-trading-course/>

After you have made your purchase you will need to send me your unique **Machine ID**. I will use it to authorize your computer to use the TD Volume Profile Pack.

To learn your Machine ID go to your NinjaTrader control panel and press **Help → About...**



- You will find your unique Machine ID there. Copy it and send it to my email: contact@traderdale.com



After that, I will authorize your computer to use the TD's Volume Profile Pack. This could take few minutes, few hours, but usually no more than one working day. I will let you know via email when your computer has been enabled to use the TD's Volume Profile Pack.

Setting up TD's Fixed/Flexible Volume Profile

- Create a new chart or use an existing one. Right click the chart area and go to "Indicators"



- Find the "TD Fixed Volume Profile" and "TD Flexible Volume Profile" in the indicator list and press "add".

The screenshot shows the 'Indicators' dialog box. The 'Available' list on the left contains various indicators, with 'TD Fixed Volume Profile' and 'TD Flexible Volume Profile' highlighted by red boxes. The 'Configured' list is currently empty. At the bottom of the dialog, there is an 'add' button highlighted with a red box, along with 'remove up down' options. The 'Properties' panel on the right shows the configuration for the selected indicator:

- Fixed Profile**
 - Data Period: Seconds
 - Period Value: 10
 - Histogram Color: DarkCyan
 - Histogram Opacity: 0,2
 - Side: Left
 - Behind Bars:
 - Range Size: Medium
 - Calculation Type: Volume
 - Profile Period: Daily
 - Histogram Width: 0,3
- Data Series**
 - Input series: Close
- Set up**
 - Calculate: On bar close
 - Label: TD Fixed Volume Profile
 - Maximum bars look back: 256
- Visual**
 - Auto scale:
 - Displacement: 0
 - Display in Data Box:
 - Panel: 1
 - Price marker(s):

Buttons at the bottom: OK, Cancel, Apply.

- Both indicators are set to default settings. You can change your settings by selecting the indicator and adjusting it's Properties. **Only change Fixed/Flexible Profile settings and Misc.** Don't change settings in Data Series, Set up, and Visual.

The screenshot shows the 'Indicators' window with the following settings visible in the 'Properties' pane:

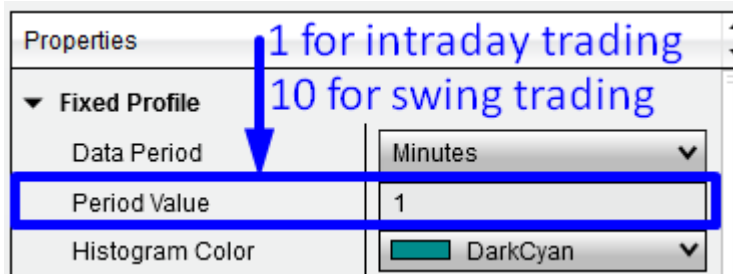
- Fixed Profile:**
 - Data Period: Minutes
 - Period Value: 1
 - Histogram Color: DarkGray
 - Histogram Opacity: 0.4
 - Side: Left
 - Behind Bars:
 - Range Size: Milli
 - Calculation Type: Volume
 - Profile Period: Daily
 - Histogram Width: 0.6
- Misc:**
 - ShowDollarVolume:
 - UseDigits: 6
- Data Series:**
 - Input series: GBPJPY (30 Minute)
- Setup:**
 - Calculate: On bar close
 - Label: TD Fixed Volume Profile2
 - Maximum bars look back: 256
- Visual:**
 - Auto scale:
 - Displacement: 0
 - Display in Data Box:
 - Panel: Same as input series
 - Price marker(s):
 - Scale justification: Right
 - Visible:

A red box with a large 'X' is drawn over the 'Data Series', 'Setup', and 'Visual' sub-sections. A red arrow points from the text 'Don't change this' to the 'Data Series' sub-section.

Settings details:

- **Data Period:** Select period in which you want your volume data collected.
 - **Ticks:** Most precise data, in most cases, you won't need as much precision.
 - **Seconds:** Bit less precise data than Ticks. Best to use Ticks instead of Seconds.
 - **Minutes:** Best choice. Recommended for both Intraday and Swing trading.
 - **Day:** Very rough data. You probably won't ever need to use this.

- **Period Value:** The higher the value, the less data will be used and the faster the Profile will load. The lower the value, the more precise the Profile will be, but it will also be slower to load.
Recommended setting: 1 Minute for intraday trading, 10 Minutes for Swing Trading.



- **Histogram Color:** Determines color of Volume Profile.
- **Histogram Opacity:** Determines opacity of Volume Profile. Enter any number from 0.01 to 1.
- **Behind Bars:** **On** – Volume Profile will show behind bars, **Off** – Volume Profile will show in front of bars.
- **Range Size:** Determines how detailed Volume Profile Histogram will be.
- **Calculation Type:**
 - **Volume:** Calculates the Volume Profile histogram using volume data. This is preferred setting in most of the cases.
 - **TPO:** Calculates the Volume Profile histogram based on estimated volumes (not true volumes). **Use this setting only for instruments, you don't have volume data for.** For example for long term analysis of individual stocks.

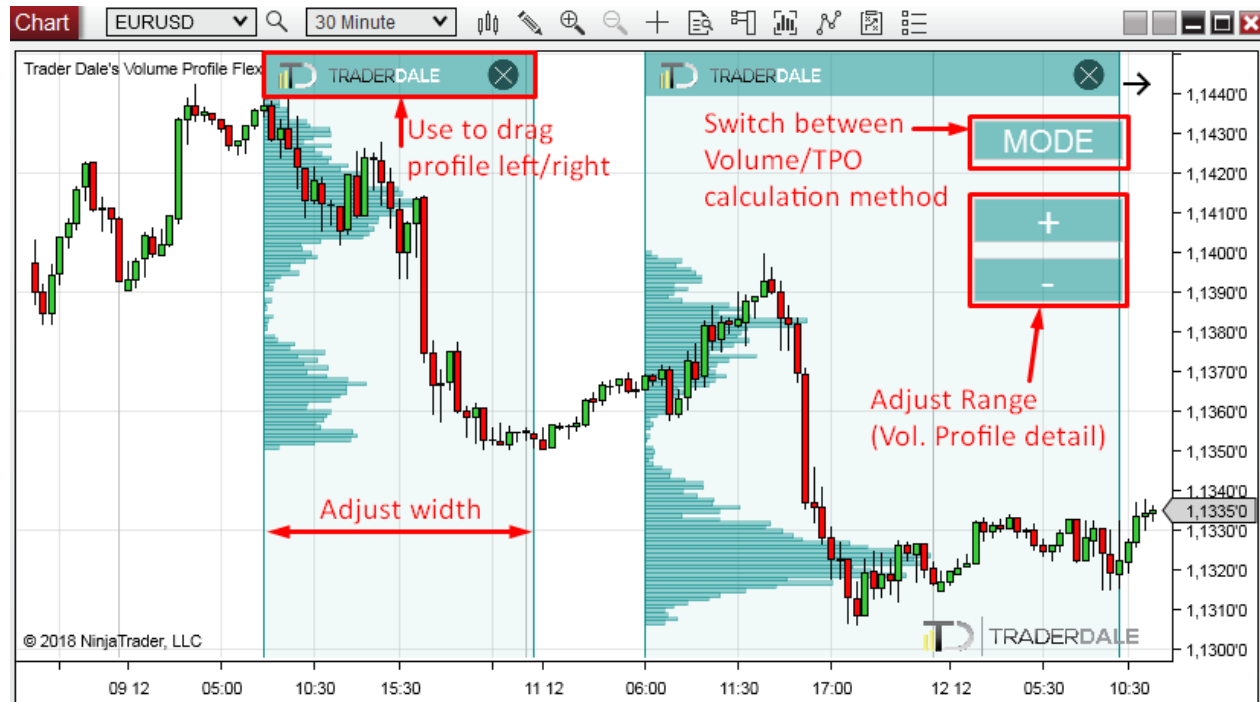
More info about Volume vs TPO calculation in this video:

https://www.youtube.com/watch?v=yB7Sna-dbM0&ab_channel=TraderDale

You can save you preferred settings as a template by hitting the “**template**” button.

Flexible Volume Profile

Shows institutional volumes in **any area you select** in your charts.

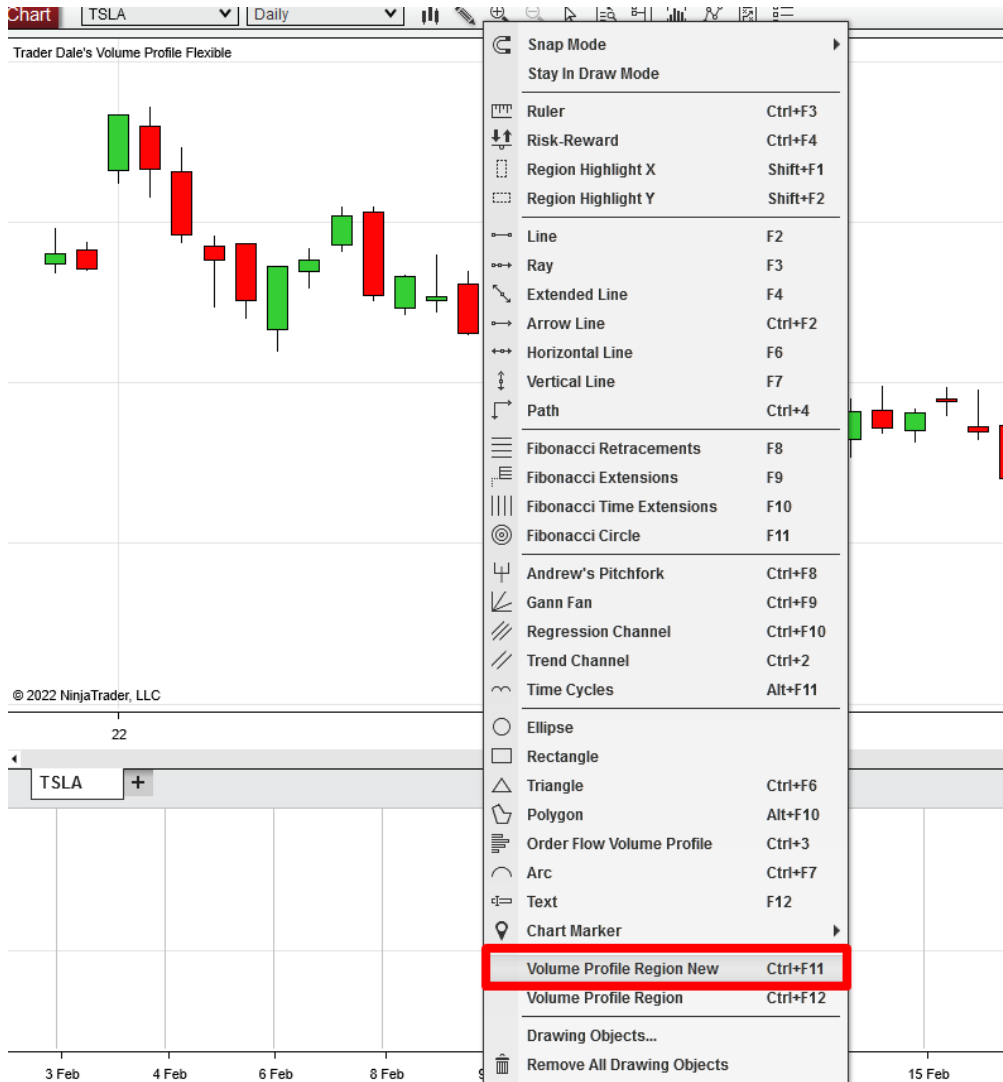


There are two ways to draw the Flexible Volume Profile:

1. Using **Drawing mode**
2. Using a **Hot Key** (recommended)

Drawing Flexible Profile using Drawing mode:

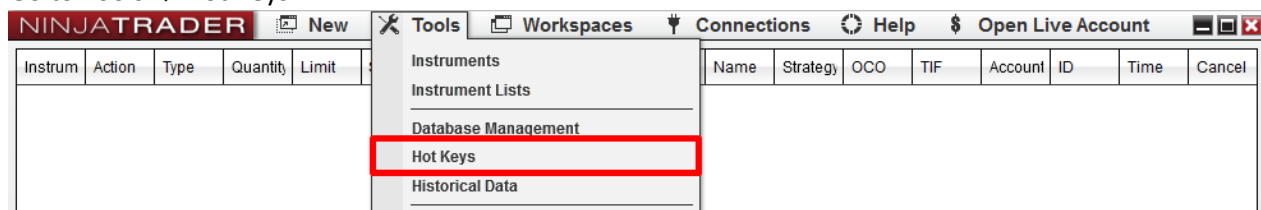
Select the "drawing icon" in your chart window and use the **Volume Profile Region New** to draw the Flexible Profile.



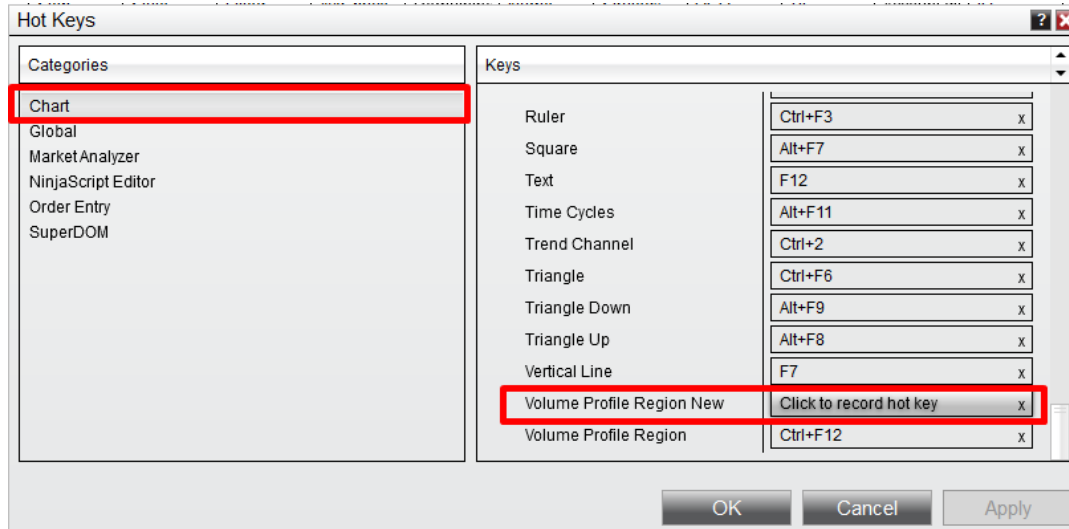
Drawing Flexible Profile using a Hot Key:

First, you need to assign Hot-key for Flexible Volume Profile in order to create and work with Flexible Profiles easily.

Go to Tools → Hot Keys



Select the “Chart” category and scroll down the “Keys” section to the bottom. There you set a Hot Key for the **Volume Profile Region**.



Now you will be able to create Flexible Volume Profiles in your charts using the Hot Key.

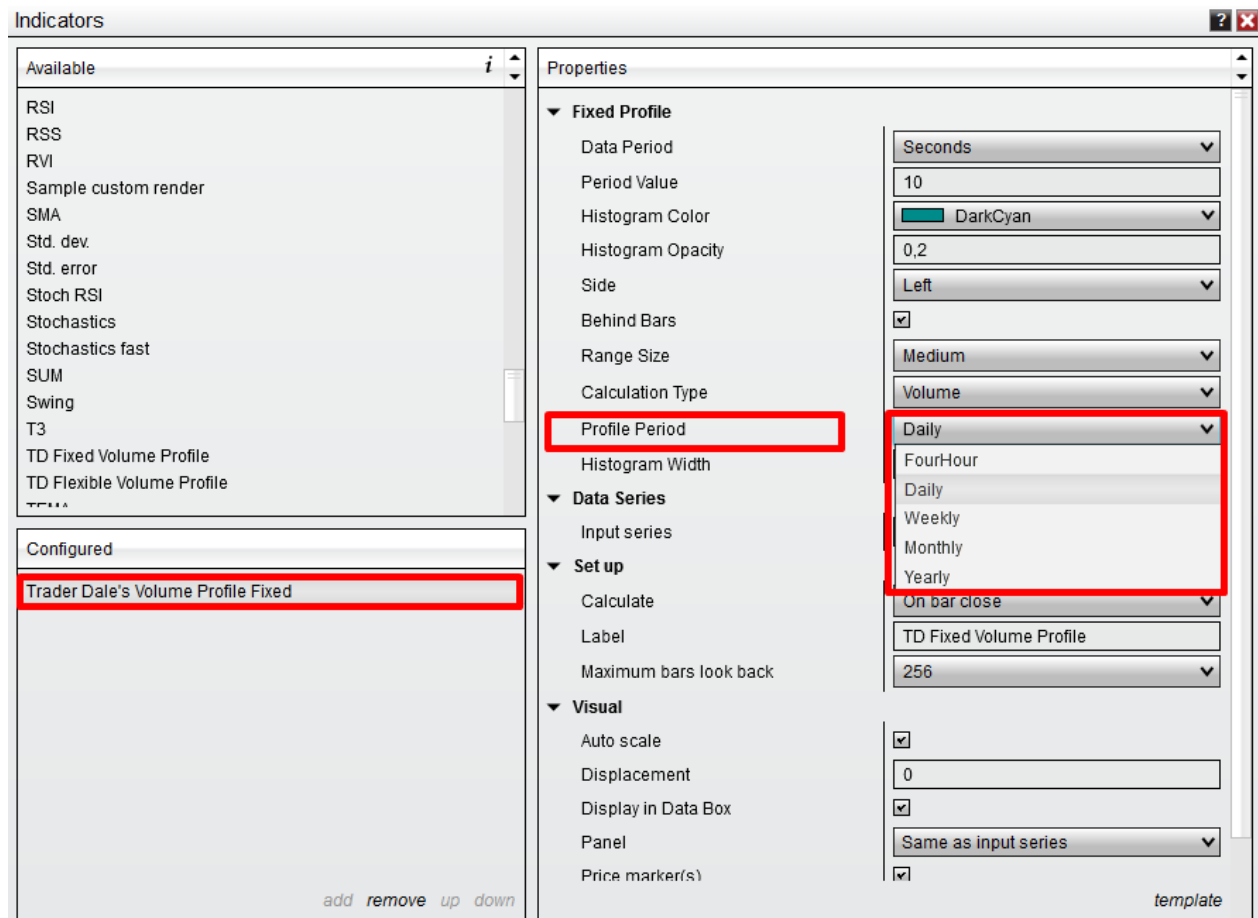
Fixed Volume Profile

Shows institutional volumes with **fixed-period profiles**.

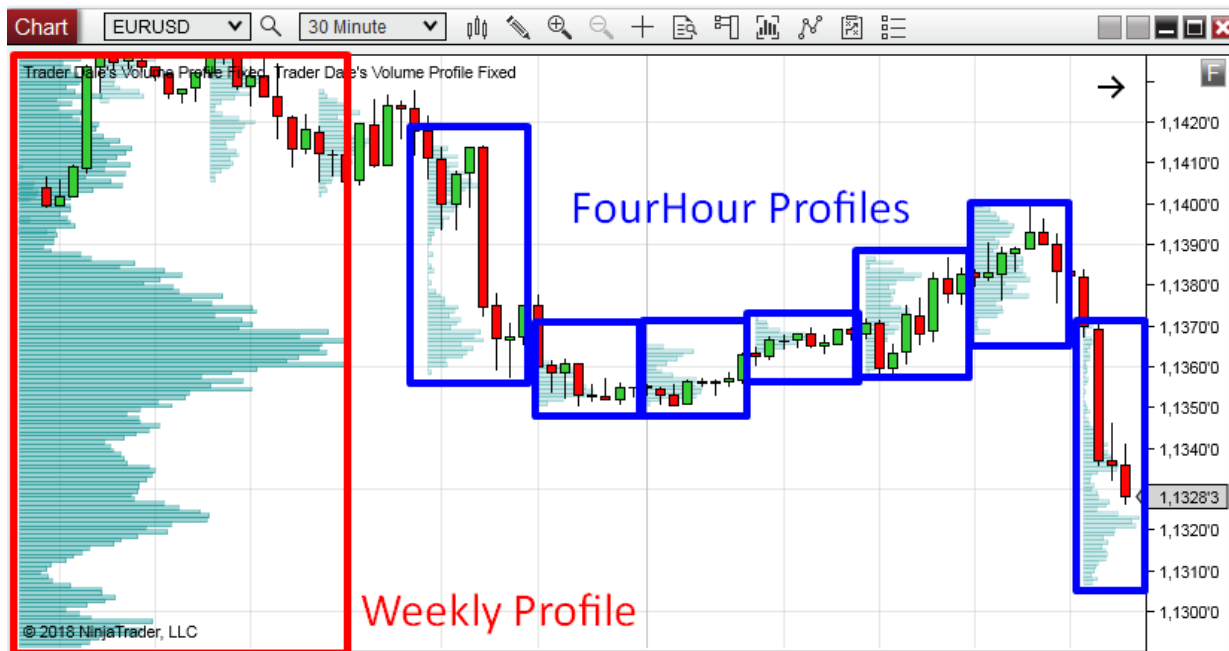
Go to Indicators (right-click your chart → Indicators) and select the: “TD’s Fixed Volume Profile”.

You can adjust the Profile Period of your Fixed Profiles. You can choose to plot:

- **FourHour** Profiles
- **Daily** Profiles
- **Weekly** Profiles
- **Monthly** Profiles
- **Yearly** Profiles



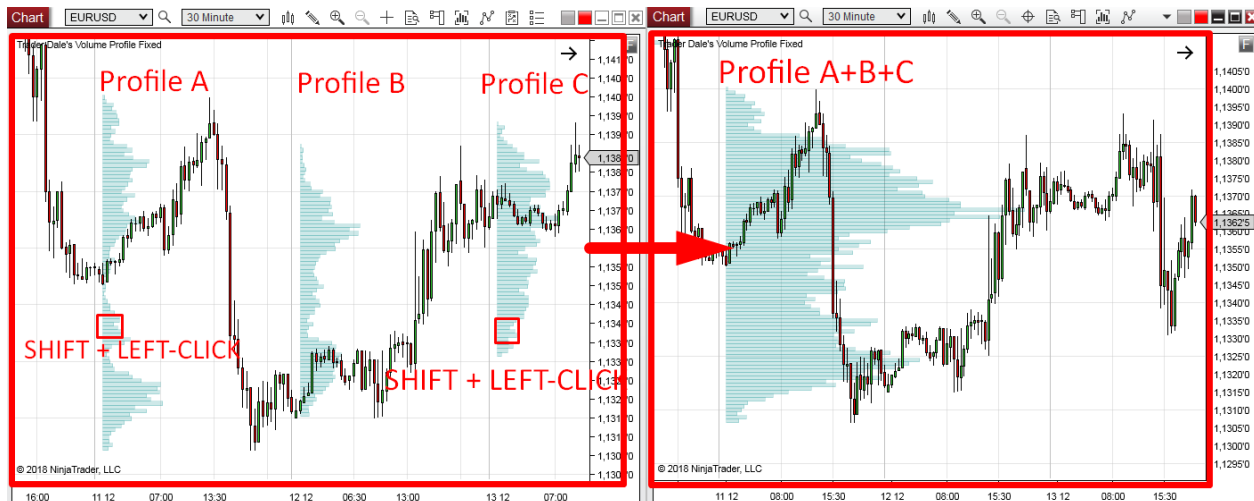
TIP: If you want to plot two kinds of fixed profiles (for example FourHour and Weekly Profiles), then you need to load the indicator twice. Use one indicator to plot FourHour Profiles and the other to plot Weekly Profiles.



Merging profiles

You can merge more Fixed Profiles into one cumulative/merged profile.

1. Point with your mouse to any Profile Histogram on your screen. Press **Shift and left-mouse click** the Profile.
2. Point with your mouse to any other Profile (which is on the right right from the first Profile) and press shift and left-click the other profile.
3. Now all profiles in the area between Profile 1 and Profile 2 will merge into one Profile.
4. If you want to **re-merge, press F5**
5. You can do only one merge at a time. Then you need to re-merge.



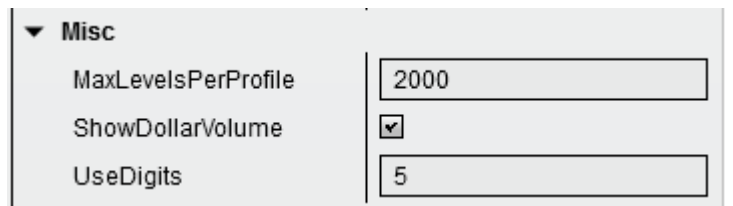
Fixed + Flexible Profiles combinations

You can combine Fixed Profiles with Flexible Profiles to create professional trading workspaces:



New features in the 2.0 version

The new version is optimized for a way faster speed and better performance. Here are the new settings you can adjust.



MaxLevelsPerProfile: This feature helps to make the volume calculation way faster. No need for you to change this setting (default is set to 2000. Don't change it).

ShowDollarVolume: This feature is useful **mostly for stocks and cryptos**.

Imagine a stock that rose from \$10/stock to \$100/stock. Trading this stock for \$100 would show way less volume than when it was for \$10. The reason is that the standard volume profile works just with number of stocks traded. Not with Dollar amount people use to trade this stock. This results in stock charts showing less volume at the top of the charts and more volume at the bottom of the charts.

The "ShowDollarVolume" feature takes care of this as it takes into the calculation also the stock price. Not just the number of stocks traded.

Check this example of Tesla stock.

Standard Volume Profile:



With the new "ShowDollarVolume" feature on:



The second picture has the Volume Profile wider as the price went up. This info gives us a better picture about how much money is traded there.

UseDigits: Setting this feature to “5” makes the Volume Profile a bit more rough but it significantly improves load speed of the indicator.

Recommended:

Set this at 6 for intraday trading and for more detail. Set it to 5 for Swing trading (less detail needed).

Contact

If you have any questions regarding the Fixed or Flexible Volume profile, please contact me at:
contact@trader-dale.com

Happy trading,

-Dale