



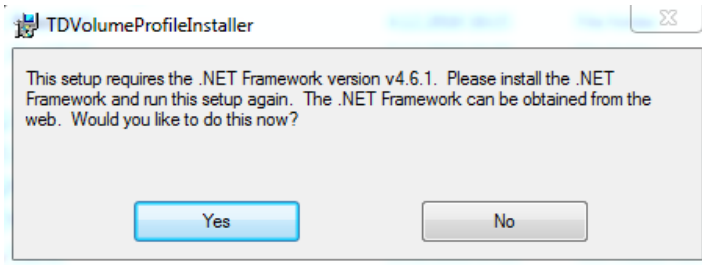
TRADER DALE'S VOLUME PROFILE PACK QUICK GUIDE

Contents

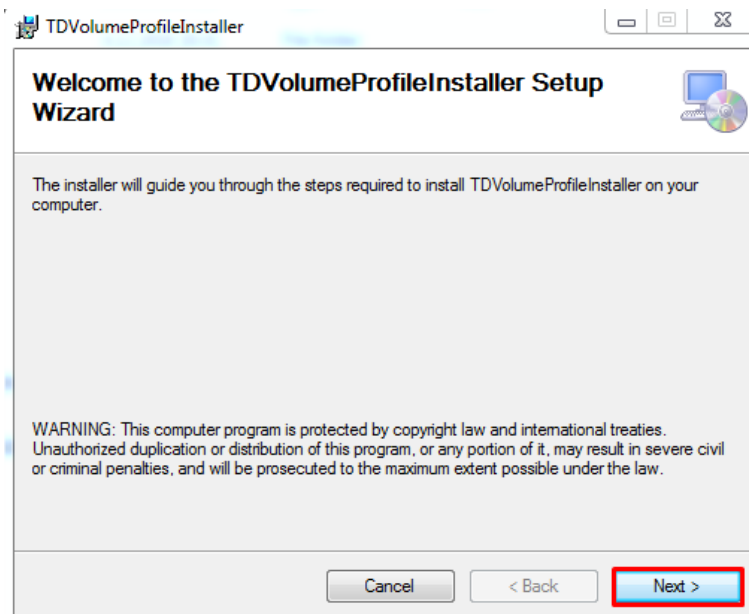
Installation.....	2
Licensing	4
Setting up TD's Fixed/Flexible Volume Profile	5
Flexible Volume Profile.....	8
Fixed Volume Profile	11
Contact	14

Installation

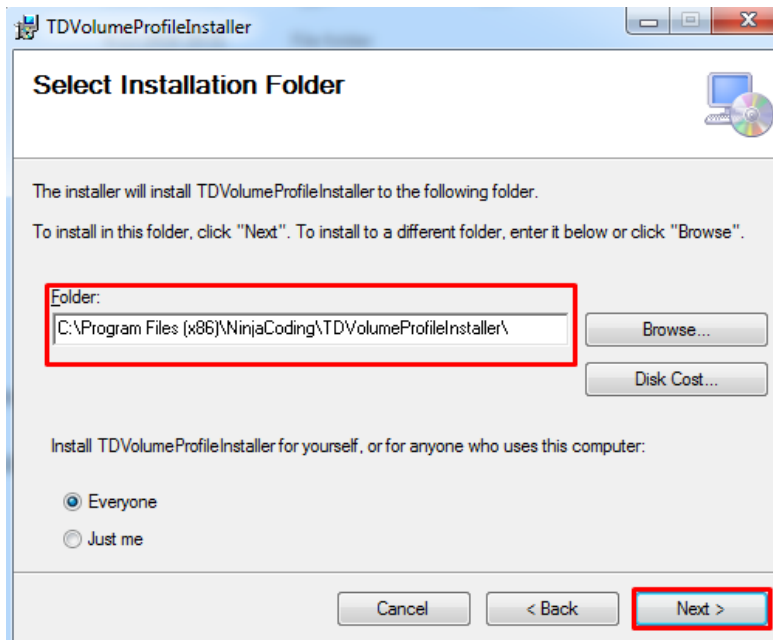
- Run **TDVolumeProfilePackInstaller**
- If you don't have .NET Framework installed, you will get this message:



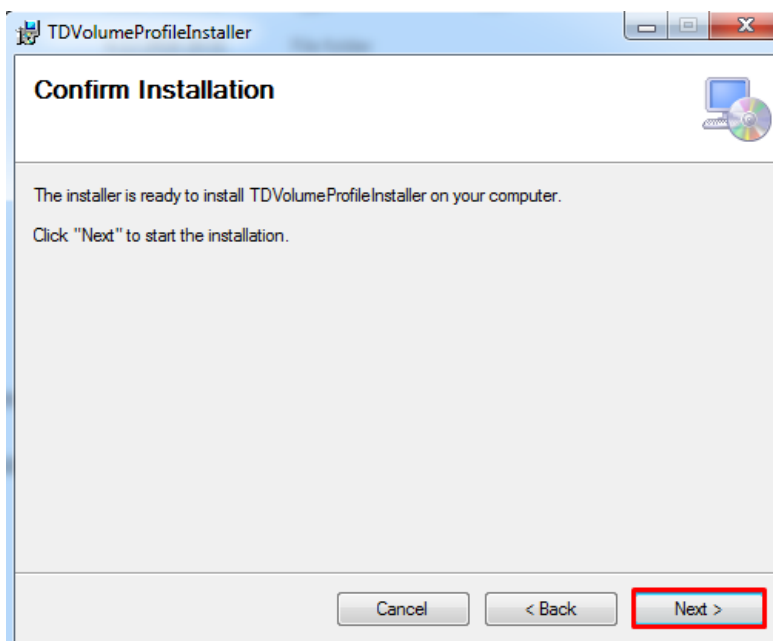
- Press Yes and proceed with the .NET framework installation
- If you are having problems with this step, simply send me an email to: contact@trader-dale.com and I will provide you with another simple solution.
- With .NET Framework installation finished (or if you don't get asked to install it), proceed with the Volume Profile installation:
- Press Next and go to the next step



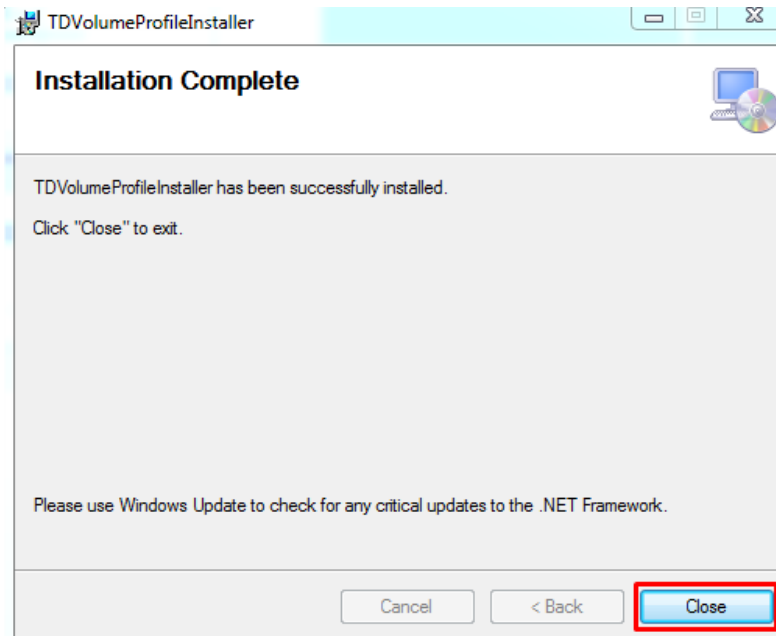
- You will get asked to select Folder for your installation. It doesn't matter which folder you select. Nothing will get installed there. Press **Next** to proceed.



- Press **Next** again to install TD Volume Profile Pack. At this step your Windows firewall could ask you if you want this program to make changes to your computer. Answer: "Yes"



- After that your installation will be finished and you can close the installer.



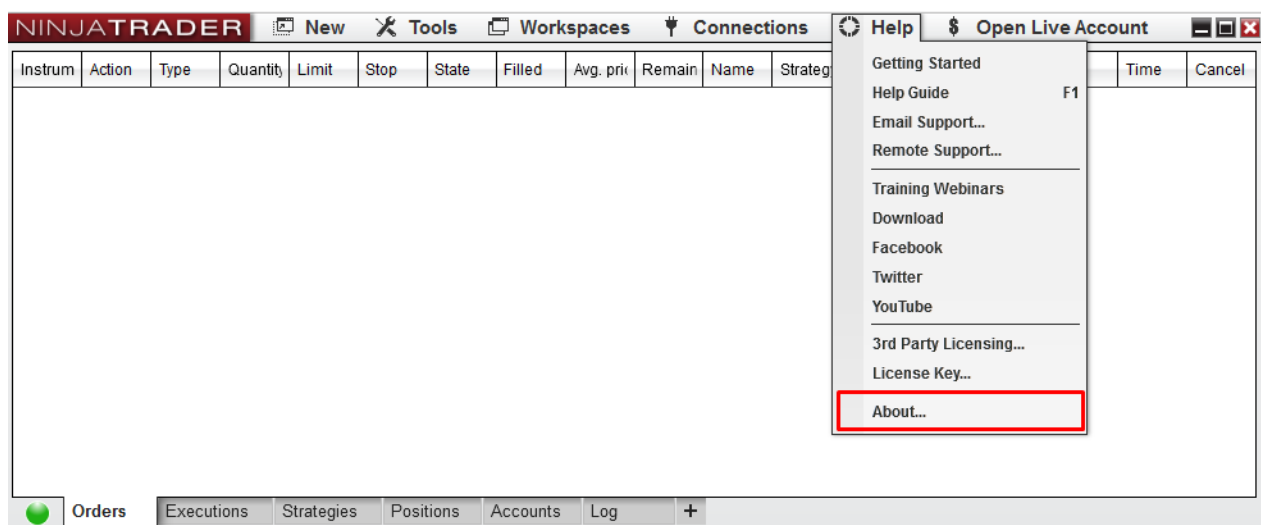
- Start your NinjaTrader 8 platform (if you had it running during the installation process you need to re-start it).

Licensing

TD's Volume Profile Pack is automatically set to **5-day FREE trial**. After this period you will get asked to purchase a **lifetime license**. You can purchase your license here: <https://members.trader-dale.com/forex-trading-course/>

After you have made your purchase you will need to send me your unique **Machine ID**. I will use it to authorize your computer to use the TD Volume Profile Pack.

To learn your Machine ID go to your NinjaTrader control panel and press **Help → About...**



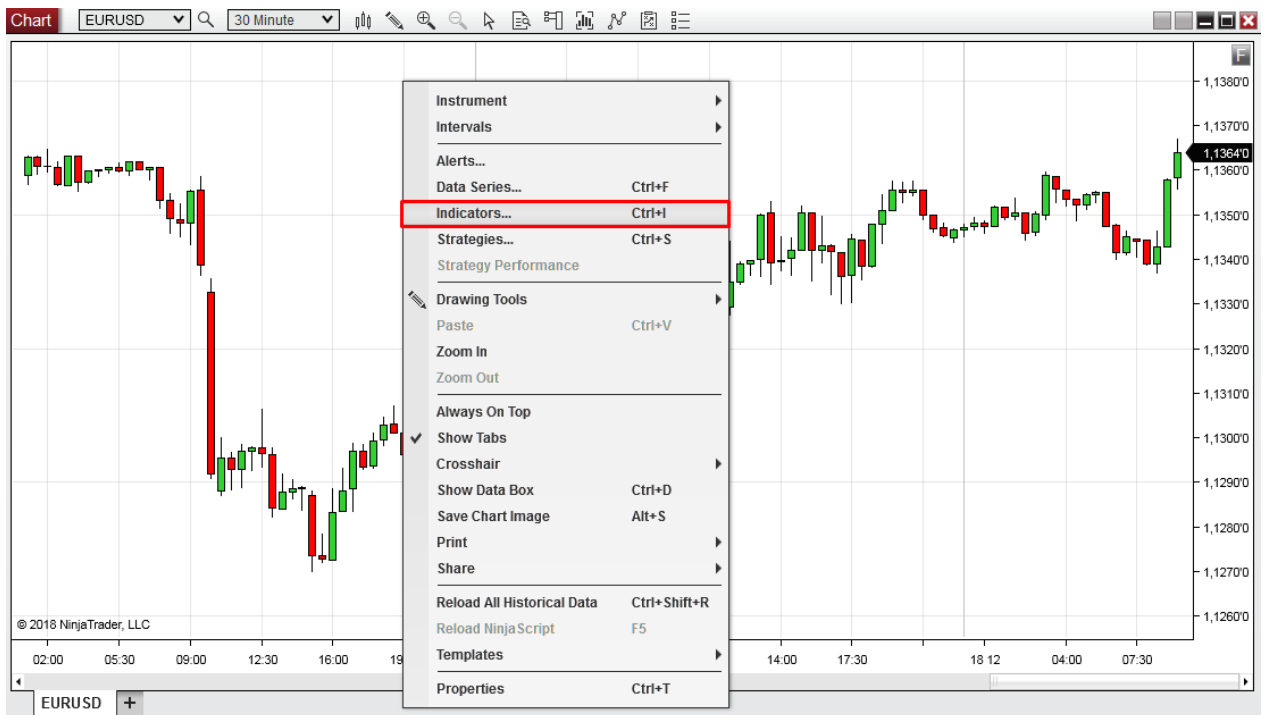
- You will find your unique Machine ID there. Copy it and send it to my email: contact@trader-dale.com



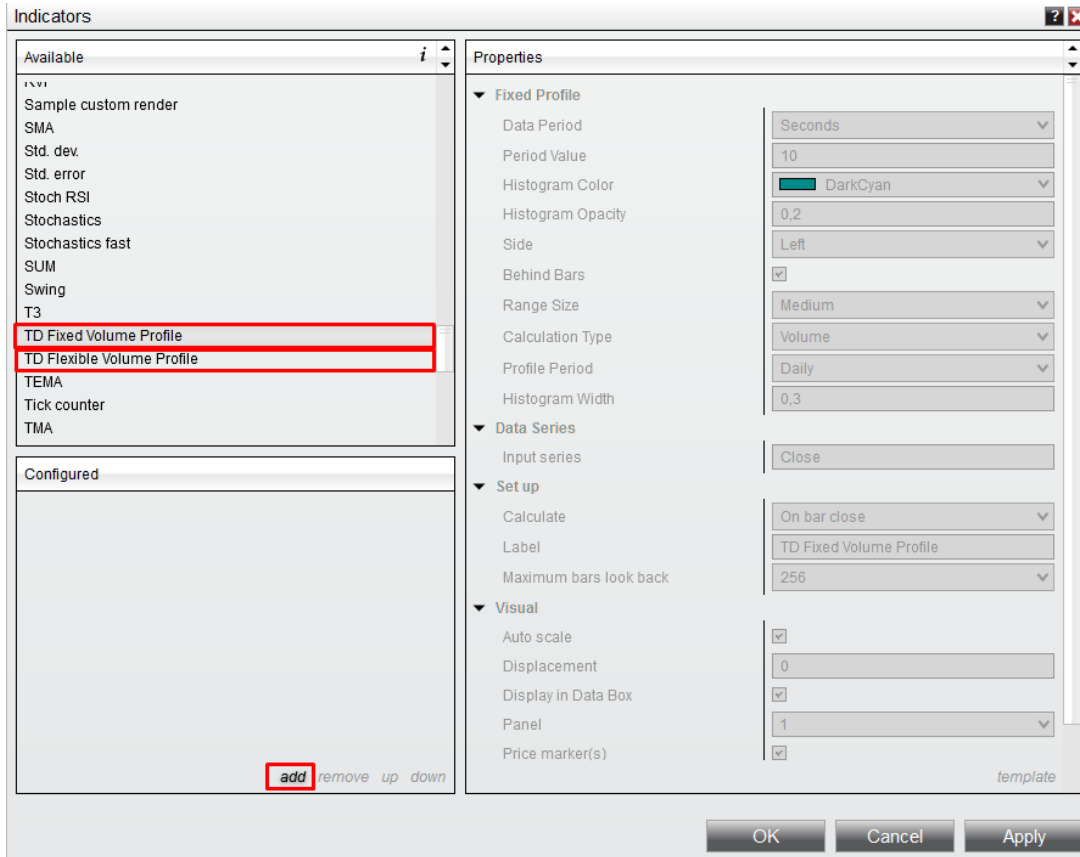
After that, I will authorize your computer to use the TD's Volume Profile Pack. This could take few minutes, few hours, but usually no more than one working day. I will let you know via email when your computer has been enabled to use the TD's Volume Profile Pack.

Setting up TD's Fixed/Flexible Volume Profile

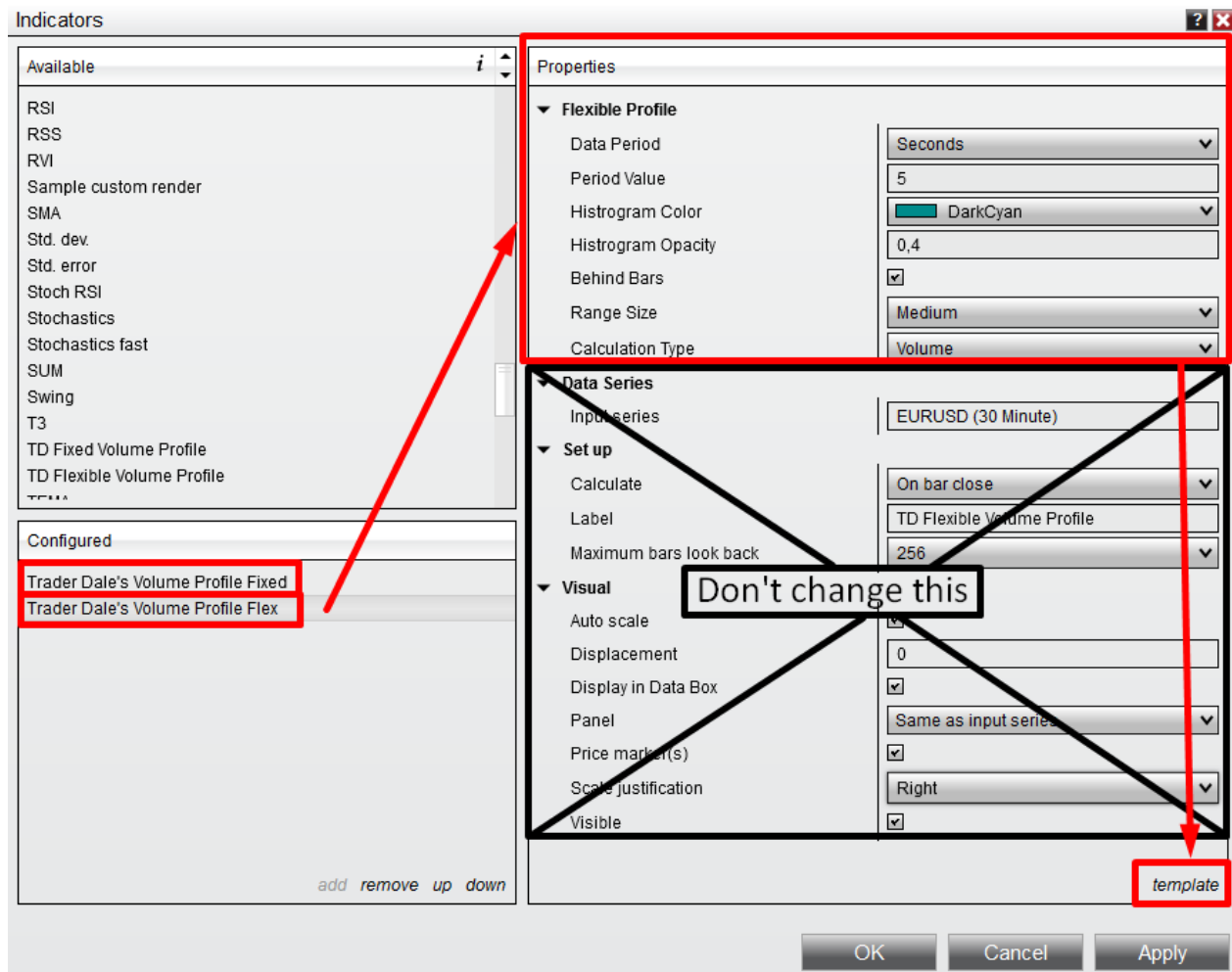
- Create a new chart or use an existing one. Right click the chart area and go to "Indicators"



- Find the “TD Fixed Volume Profile” and “TD Flexible Volume Profile” in the indicator list and press “add”.



- Both indicators are set to default settings. You can change your settings by selecting the indicator and adjusting its Properties. **Only change Fixed/Flexible Profile settings.** Don't change settings in Data Series, Set up, and Visual.



Settings details:

- **Data Period:** Select period in which you want your volume data collected.
 - **Ticks:** Most precise data. Use only for scalping and intraday trading.
 - **Seconds:** Use for intraday trading.
 - **Minutes:** Use for swing trading.
 - **Day:** For planning long term investmens. It is preferable to use TPO calculation settings instead of this!
- **Period Value:** Determines how many Ticks/Seconds/Minutes/Days are used for every volume at price calculation. The higher the number, the less data will be used and the faster the Profile will work. The lower the number, the more precise the Profile will be, but it will also be slower.
- **Histogram Color:** Determines color of Volume Profile.
- **Histogram Opacity:** Determines opacity of Volume Profile. Enter any number from 0.01 to 1.
- **Behind Bars:** **On** – Volume Profile will show behind bars, **Off** – Volume Profile will show in front of bars.
- **Range Size:** Determines how detailed Volume Profile Histogram will be. **Smaller range sizes** print very detailed histogram (ideal for intraday trading). **Bigger ranges** are ideal for swing trading. The smaller the range the longer it will take to load the profile.

- **Calculation Type:**

- **Volume:** Calculates the Volume Profile histogram using volume data. This is preferred setting in most of the cases.
- **TPO:** Calculates the Volume Profile histogram based on estimated volumes (not true volumes). **Use this setting only for instruments, you don't have volume data for.** For example for long term analysis of individual stocks.

You can save you preferred settings as a template by hitting the “**template**” button.

Below is a table with the best working settings for various instruments and timeframes

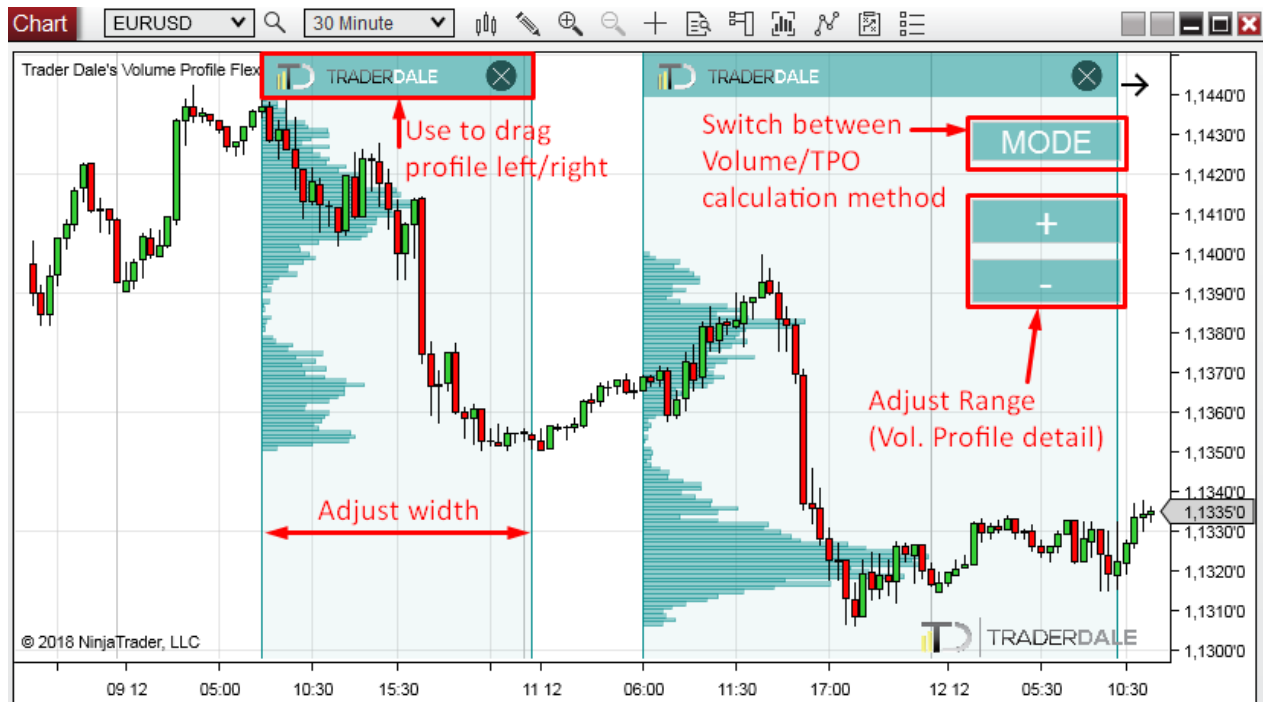
FOREX	TIME FRAME	DATA PERIOD	RANGE SIZE	CALCULATION TYPE
	30 Minute	Tick 1-5, or Second 1-5	Medium	Volume
	Daily	Minutes 1	ExtraLarge	Volume
	Weekly	Minutes 1-5	Huge/ExtraHuge	Volume
	Monthly	Minutes 10	Gigantic/Maximum	Volume
FUTURES	TIME FRAME	DATA PERIOD	RANGE SIZE	CALCULATION TYPE
	30 Minute	Tick 1-3	Mili to Small	Volume
	Daily	Minutes 1	Small to Large	Volume
	Weekly	Minutes 5	Medium to ExtraLarge	Volume
	Monthly	Minutes 10	Large to Huge	Volume
STOCKS	TIME FRAME	DATA PERIOD	RANGE SIZE	CALCULATION TYPE
	30 Minute	X	X	X
	Daily	Isn't used with TPO	Isn't used with TPO	TPO
	Weekly	Isn't used with TPO	Isn't used with TPO	TPO
	Monthly	Isn't used with TPO	Isn't used with TPO	TPO

TIP: If your Volume Profile is too slow to load or to work with, then adjust some or all of these settings:

1. **Data period** (go from Ticks to Seconds, or from Seconds to Minutes)
2. **Period Value** (use higher number)
3. **Range Size** (use bigger range)

Flexible Volume Profile

Shows institutional volumes in **any area you select** in your charts.

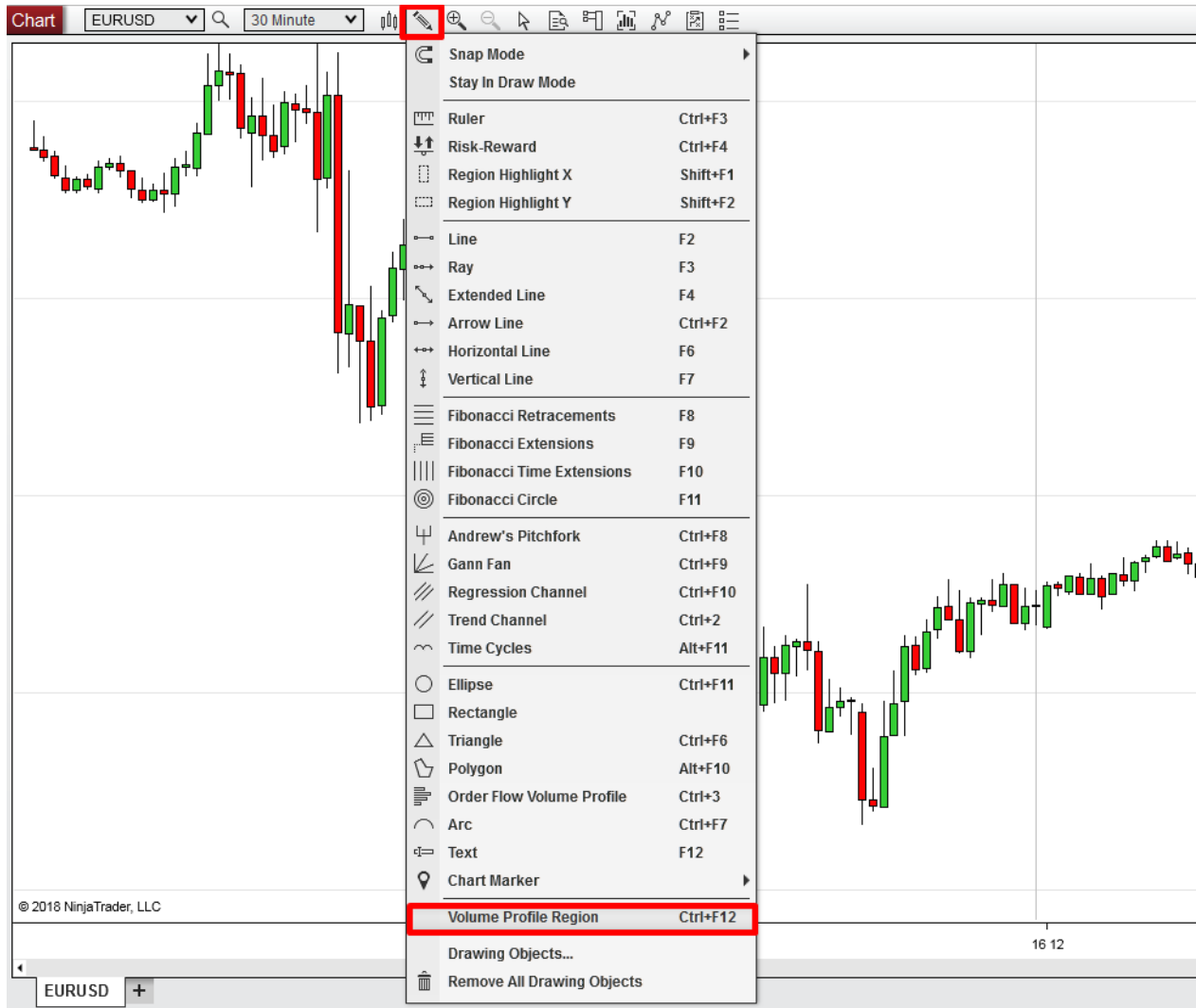


There are two ways to draw the Flexible Volume Profile:

1. Using **Drawing mode**
2. Using a **Hot Key** (recommended)

Drawing Flexible Profile using Drawing mode:

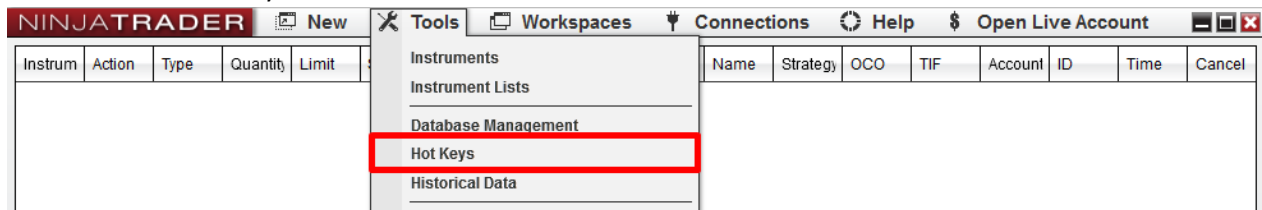
Select the "drawing icon" in your chart window and use the **Volume Profile Region** to draw the Flexible Profile.



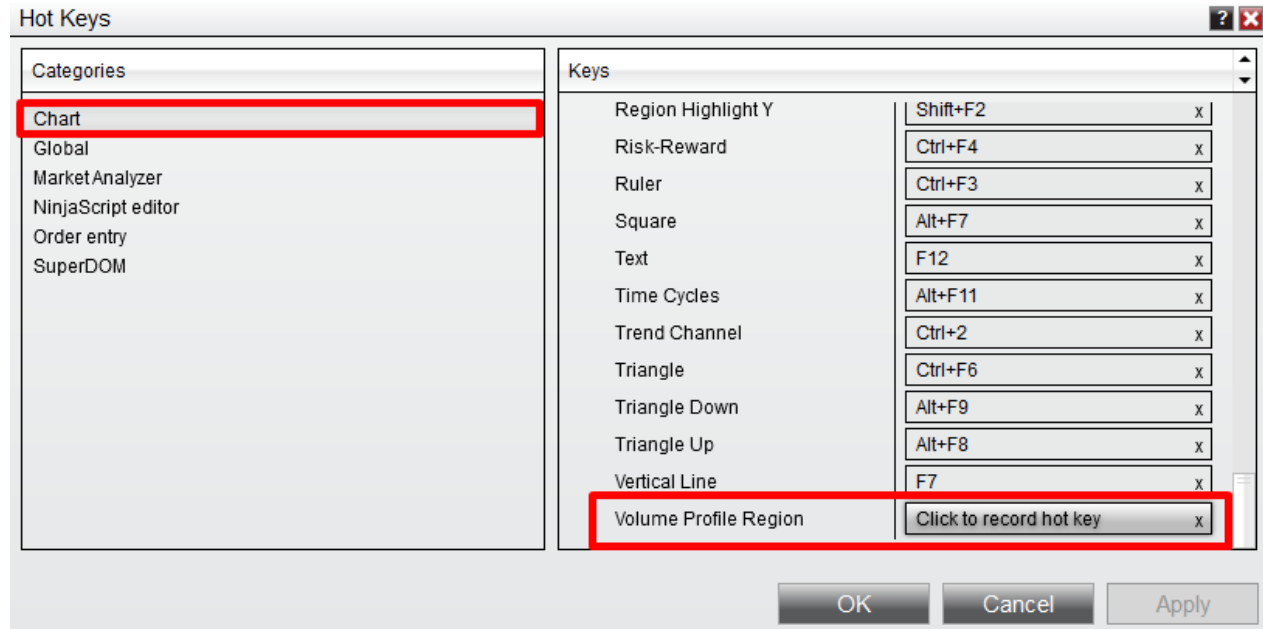
Drawing Flexible Profile using a Hot Key:

First, you need to assign Hot-key for Flexible Volume Profile in order to create and work with Flexible Profiles easily.

Go to Tools → Hot Keys



Select the “**Chart**” category and scroll down the “**Keys**” section to the bottom. There you set a Hot Key for the **Volume Profile Region**.



Now you will be able to create Flexible Volume Profiles in your charts using the Hot Key.

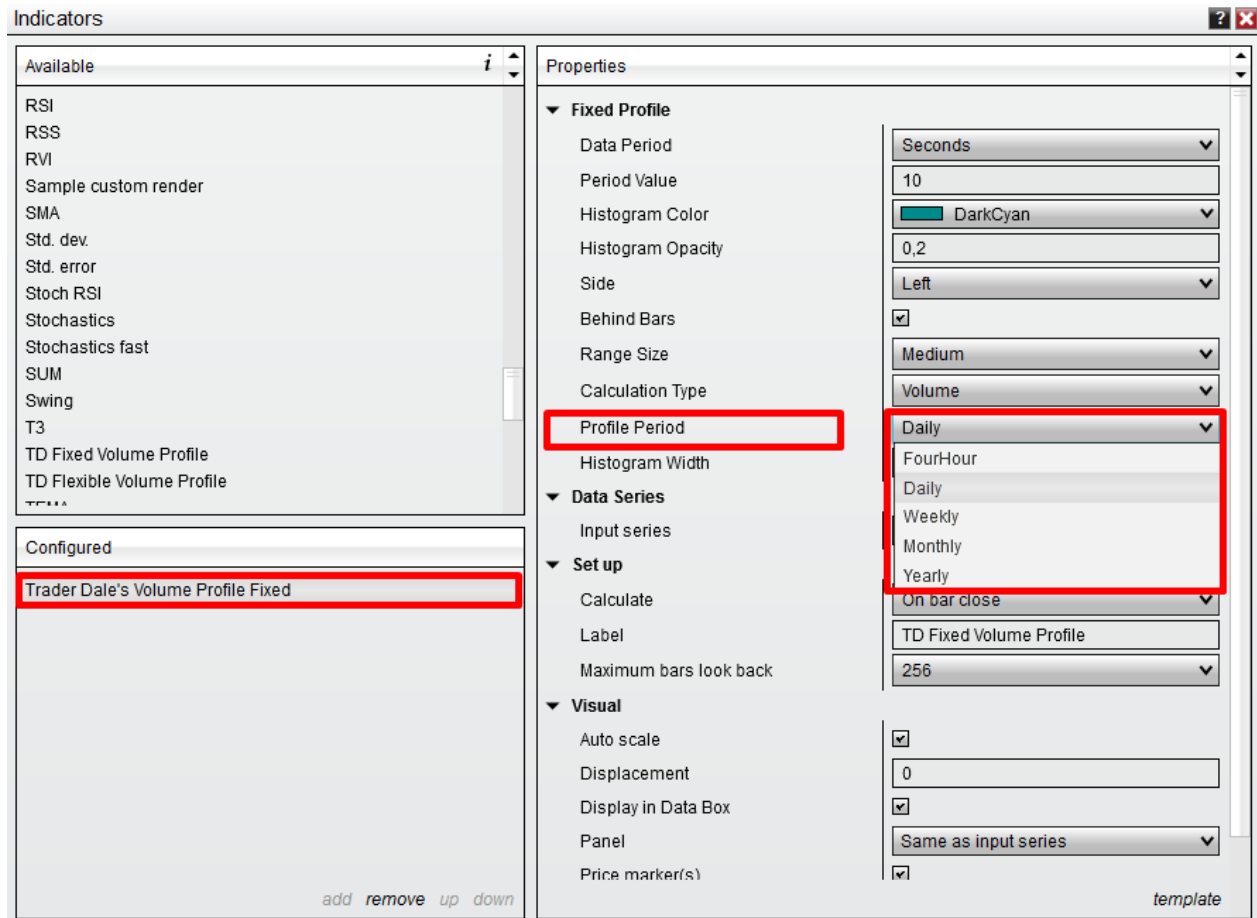
Fixed Volume Profile

Shows institutional volumes with **fixed-period profiles**.

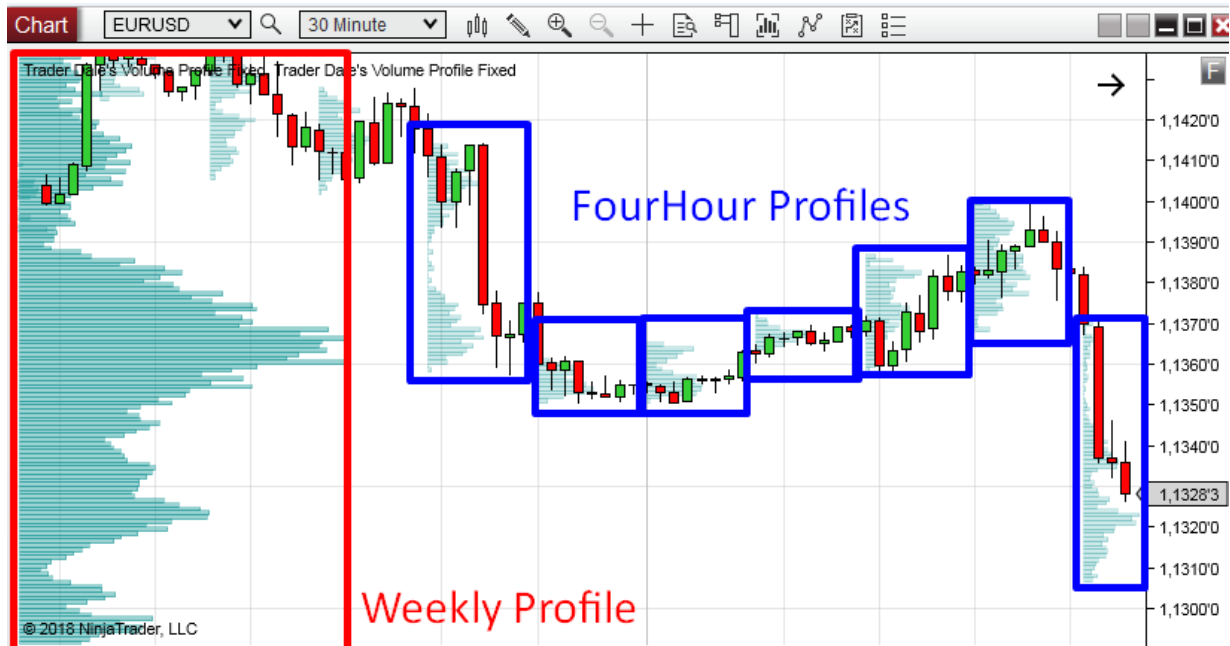
Go to Indicators (right-click your chart → Indicators) and select the: “TD’s Fixed Volume Profile”.

You can adjust the Profile Period of your Fixed Profiles. You can choose to plot:

- **FourHour** Profiles
- **Daily** Profiles
- **Weekly** Profiles
- **Monthly** Profiles
- **Yearly** Profiles



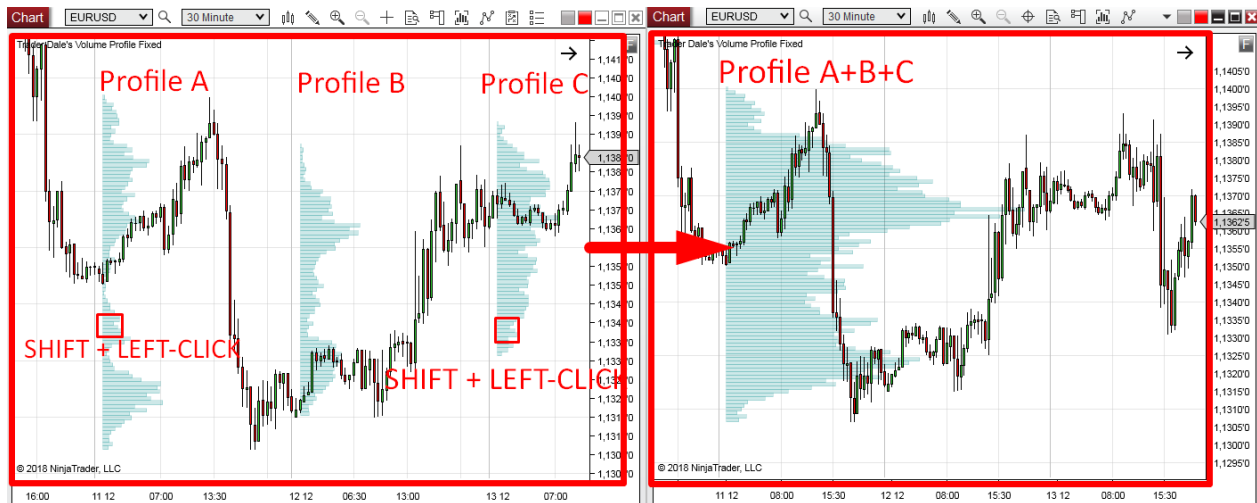
TIP: If you want to plot two kinds of fixed profiles (for example FourHour and Weekly Profiles), then you need to load the indicator twice. Use one indicator to plot FourHour Profiles and the other to plot Weekly Profiles.



Merging profiles

You can merge more Fixed Profiles into one cumulative/merged profile.

1. Point with your mouse to any Profile Histogram on your screen. Press **Shift and left-mouse click** the Profile.
2. Point with your mouse to any other Profile (which is on the right right from the first Profile) and press shift and left-click the other profile.
3. Now all profiles in the area between Profile 1 and Profile 2 will merge into one Profile.
4. If you want to **re-merge, press F5**
5. You can do only one merge at a time. Then you need to re-merge.



Fixed + Flexible Profiles combinations

You can combine Fixed Profiles with Flexible Profiles to create professional trading workspaces:



Contact

If you have any questions regarding the Fixed or Flexible Volume profile, please contact me at:

contact@trader-dale.com

Happy trading,

-Dale